



杭州正久机械制造有限公司
Hangzhou Zhengjiu Machinery Manufacturing Co., LTD

📍 / 地址 Add.

中国浙江省杭州市桐庐县崇川路551号
551 Tangchuan Road, Tonglu County, Hangzhou City, Zhejiang Province, China

☎ / 电话 Tel

+86-571-64288997 +86-571-63168358

✉ / 邮箱 Email

zjmachinery@hzzjx.com

🌐 / 网址 Website

www.hzzj-water.com www.hzzjde.com



ZHENGJIU MACHINERY

酒厂交钥匙工程服务商
酿酒蒸馏设备制造商

DISTILLERY TURNKEY PROJECT SERVICE PROVIDER
MANUFACTURER OF FERMENTATION AND DISTILLATION EQUIPMENT



Hangzhou Zhengjiu Machinery Manufacturing Co., LTD
杭州正久机械制造有限公司



资质证书

QUALIFICATION CERTIFICATE



正久机械
ZHENGJIU MACHINERY

为蒸馏者创新

INNOVATE FOR DISTILLERS



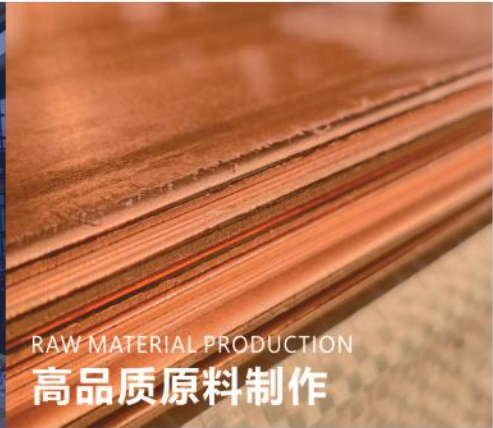
竞争优势 **COMPETITIVE ADVANTAGE**



CUSTOMIZED SOLUTIONS
全流程定制方案



ENGINEERING EXPERIENCE
交钥匙工程经验



RAW MATERIAL PRODUCTION
高品质原料制作

关于我们 ABOUT US

杭州正久机械制造股份有限公司坐落于浙江省杭州市桐庐经济开发区。公司成立于2014年，注册资金3000万，占地面积约17000m²，拥有100多名员工，是一家集产品设计、研发、制造、工程安装于一体的综合性新兴企业。处于中国蒸馏设备研发制造的前沿，是国内第一批了解并生产紫铜蒸馏器的厂家。

公司的主营业务为酒类生产线、各种洋酒蒸馏设备、白酒优化设备、精酿啤酒设备和用于食品饮料加工的不锈钢设备等，并为客户提供威士忌酒厂交钥匙工程、白酒优化设备交钥匙工程和精酿啤酒设备交钥匙工程及服务。

通过不断的技术创新，公司已获得了多项专利，并先后通过国际ISO9001质量管理体系认证和欧洲CE安全认证，正久始终将为客户制造全球性价比最高的设备和产品作为最高追求。

Hangzhou Zhengjiu Machinery Manufacturing Co., Ltd. is located in Tonglu Economic Development Zone, Hangzhou City, Zhejiang Province. Zhengjiu Machinery was founded in 2014, registered capital of 30 million yuan, covers an area of about 17000m², with more than 100 employees, is a collection of product design, research and development, manufacturing, engineering installation in one of the comprehensive emerging enterprises, in China's distillation equipment research and development and manufacturing forefront, is the first batch of understanding and production of copper still manufacturers.

The main business of the company is liquor production line, various liquor distillation equipment, liquor optimization equipment, craft beer equipment and stainless steel equipment for food and beverage processing, etc., and provides customers with whiskey distillery turnkey project, liquor optimization equipment turnkey project and craft beer equipment turnkey project and services.

Through continuous technological innovation, the company has obtained a number of patents, and has passed the international ISO9001 quality management system certification and the European CE safety certification.

准则 CRITERION
INTEGRITY HELPS ITSELF LONG TEMPERED INTO STEEL

**正直守己
久炼成钢**

理念 IDEA
INTEGRATE THE FRONTIER, CAST THE CUTTING-EDGE

**融汇前沿
铸就尖端**



HAMMER SHAPING
纯手工捶打塑性



PRODUCTION QUALITY INSPECTION
高标准生产质检



AFTER SALES GUARANTEE
全球化售后保障

研发团队
R&D TEAM



STAY TRUE TO THE MISSION
不忘初心

早在2010年的时候，我就有了要将酒蒸馏器做出中国制造的品牌的这样一个想法，经过不断的学习研究和人才招纳，在2014年创办了正久机械，本着始终为客户制造全球性价比较高设备的追求，坚持不断创新设备和升级技术。

正久机械在中国市场，已服务了近30个省、自治区、直辖市的酒类企业；在国际市场，产品已销往美国、加拿大、澳大利亚、新西兰、英国、法国、德国、荷兰、瑞典、挪威、墨西哥、哥伦比亚、秘鲁、南非等50多个国家。

As early as 2010, I had the idea of making spirits distillers made in China into well-known brands. After continuous study and research and team building, we founded Zhengjiu Machinery in 2014. In line with the goal of always manufacturing the world's most cost-effective equipment for customers, we insist on constantly innovating equipment and upgrading technology.

In the Chinese market, Zhengjiu Machinery has served liquor enterprises in nearly 30 provinces; In the international market, the distillery equipment of Zhengjiu Machinery has been sold to distilleries in more than 50 countries such as the United States, Canada, Australia, New Zealand, the United Kingdom, France, Germany, the Netherlands, Sweden, Norway, Mexico, Colombia, Peru, South Africa.

制造团队
MANUFACTURING TEAM



生产车间
PRODUCTION WORKSHOP



质检车间
QUALITY INSPECTION WORKSHOP



Chairman - Jianfei Zhou
董事长一周建飞



ARE YOU READY TO PLAN YOUR DISTILLERY ?

准备好规划你的酒厂了吗？

我们可以帮你

WE CAN SUPPORT YOU

综合项目规划

① COMPREHENSIVE PLANNING OF THE WHOLE PROJECT

定制制造安装

② CUSTOMIZED EQUIPMENT MANUFACTURING AND ON-SITE INSTALLATION

技术支持与市场合作

③ GLOBAL TECHNICAL SUPPORT AND MARKET COOPERATION



啤酒厂升级改造项目

BEER FACTORY UPGRADE
AND RENOVATION PROJECT



威士忌酒厂综合建设项目

WHISKEY DISTILLERY
COMPREHENSIVE CONSTRUCTION PROJECT

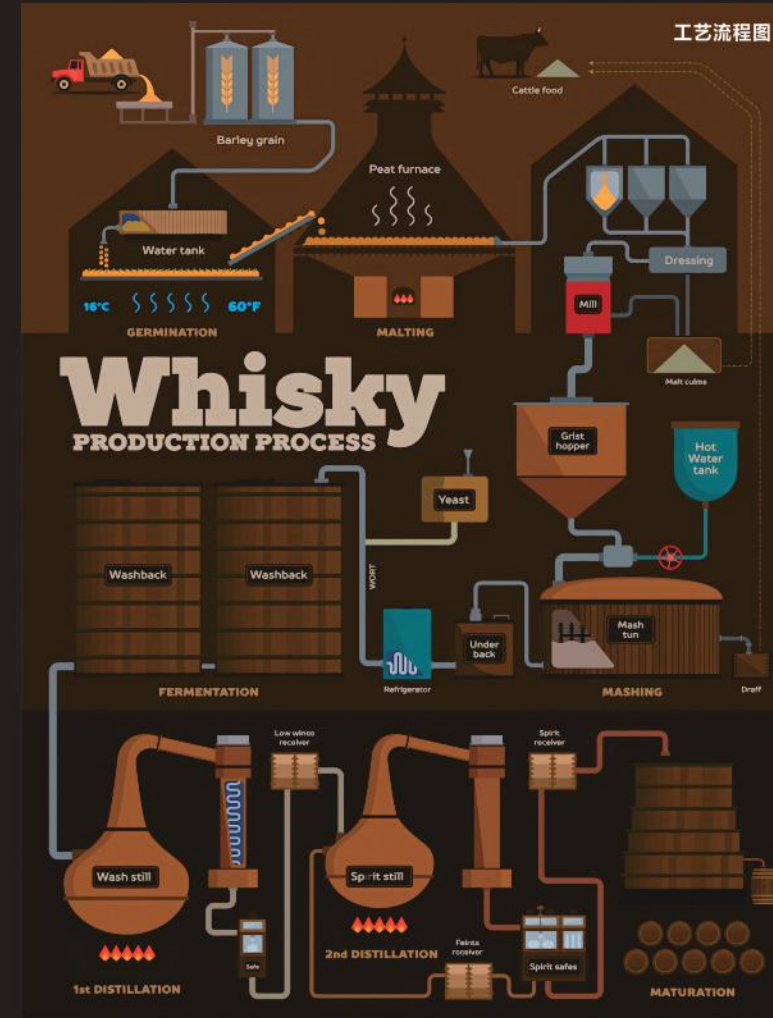


烈酒蒸馏实验室项目

LIQUOR DISTILLATION
LABORATORY PROJECT

TURNKEY PROJECT COOPERATION MODE

交钥匙工程合作方式



产品目录

PRODUCT CATALOG

原料处理系统 RAW MATERIAL HANDLING SYSTEM	11
酵母扩培系统 YEAST MANAGEMENT	12
糖化系统 BREWHOUSE	13
发酵罐/清酒罐 FERMENTATION & STORAGE TANKS	16
壶式蒸馏器 POT STILL	18
柱式蒸馏器 COLUMN STILL	24
多功能蒸馏设备 MULTI-FUNCTION DISTILLATION EQUIPMENT	29
小型蒸馏设备 SMALL DISTILLER	38
CIP系统 CIP SYSTEM	39
自动化控制系统 AUTOMATIC CONTROL SYSTEM	40
容器储罐 CONTAINER STORAGE TANK	41

RAW MATERIAL PROCESSING SYSTEM

原料处理系统

干式粉碎机 Dry crusher

- 粉碎速度快、麦芽粉碎质量好、麦皮破而不碎
The malt crushing speed is fast, the malt crushing quality is good, broken wheat husks without breaking
- 安装操作简单方便、粉碎工作更灵活
The installation and operation of the equipment is simple and convenient, and the work of malt crushing is more flexible



干式粉碎机

Dry Crusher

湿式粉碎机 Wet crusher

- 研磨性能优异、减小过滤槽负荷
Excellent crushing performance, lower filter tank load
- 高收得率
Higher yield
- 粉碎时无粉尘、减小环境影响
Crushing process is dust-free and has less impact on the environment



湿式粉碎机

Wet Crusher

YEAST MANAGEMENT

酵母扩培系统

- 可根据客户要求个性化定制两罐或三罐工艺
Two-cans or three-cans can be customized according to customer requirements
- 采用高卫生标准工艺设计
High hygiene standards for process design
- 集成了所有清洁和灭菌步骤
Integrate all cleaning and sterilization steps
- 酵母培养温度、压力、充氧条件以及麦汁添加量均可实现自动化控制
Yeast culture temperature, pressure, oxygenation conditions and wort addition amount can be controlled automatically



酵母扩培系统

Yeast Management



酵母扩培系统

Yeast Management



酵母扩培系统

Yeast Management



酵母扩培系统

Yeast Management

BREW HOUSE

糖化间



- 盘管/夹套式米勒板蒸汽加热，带清洗球
Coil/jacketed Miller plate steam heating, with cleaning ball
- 大面积紊流低速搅拌孔板桨叶，实现翻与压两种搅拌效果
The orifice blade with large area turbulent flow and low speed stirring, can achieve two stirring effects: turning and pressing
- 个性化定制大视镜玻璃人孔，增加照明灯
Customized large view mirror glass manhole, increase the lighting
- 搅拌采用变频控制，热量分布均匀，节约能源
Stirring adopts frequency conversion control, heat distribution is uniform, saving energy

MASH TUN

糖化锅/糊化锅



LAUTER TUN

过滤槽

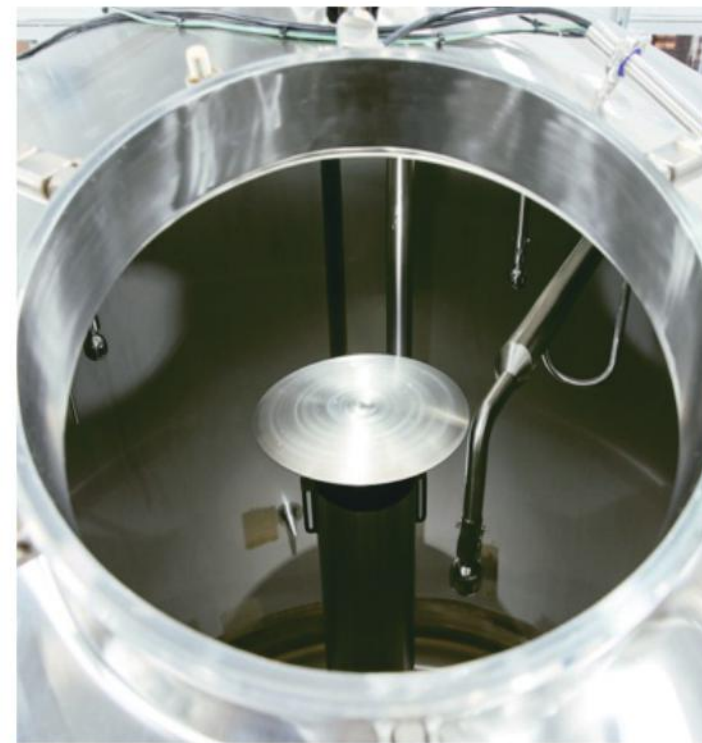


- 环管收集系统：采用多环管大口径收集系统，保证糟层洗出的均匀性，获得最大收得率。
Ring tube collection system: The multi-ring tube large-diameter collection system is adopted to ensure the uniformity of the washing out of the whole dross layer and obtain the maximum yield.
- 耕排槽系统：转动平稳，转速变频控制，自动排糟，耕刀液压升降，配置上下限保护。
Plowing and Rowing system: Smooth rotation, speed frequency conversion control, automatic rowing, hydraulic lifting of tillage knife, configuration of upper and lower limit protection.
- 防氧化洗糟方式：洗糟水近距离喷洒在液面上，并且成面状向下流，区别于一般洗球洗糟方式。
Anti-oxidation cleaning method: Washing water sprayed close to liquid surface, flows downward in a planar shape, differing from traditional washing ball method.

BREW KETTLE

煮沸锅

- 可控和恒定的蒸发率
Controlled and constant evaporation rate
- 加速凝聚效果，缩短煮沸时间，节能降耗
It can accelerate the condensation effect, shorten the boiling time, save energy and reduce consumption
- 卫生设计，便于清洗
High standard hygienic design, easy to clean



煮沸锅

Brew Kettle

WHIRLPOOL TUN

旋涡沉淀槽

- 低速切线进料，沉降时间短，热凝固物凝结紧密，分离效果好
Low speed tangential feeding, short settling time, the condensation of the solid is tight and Good separation effect
- 倒锥形槽底设置打散器和旋转喷冲装置，反冲洗凝固物，干净彻底
The bottom of the inverted cone groove is equipped with disperser and clean device to backwash the solidified material and clean it thoroughly



漩涡沉淀槽

Whirlpool Tun



3 罐组合糖化系统

3-Vessels Brewhouse

容积：300升-10000升

材质：304不锈钢/316不锈钢

加热方式：电加热/蒸汽加热

电压：220V/240V/380V/415V

控制系统：手动/半自动/全自动

组合形式：四器糖化 / 三器糖化 / 两器糖化

Customized capacity: 300-10000 liters

Material: SUS304/ SUS316

Heating method: electric heating/steam heating

Voltage: 220V/240V/380V/415V

Control system: manual/semi-automatic/fully automatic

Structure: 2/3/4 vessels combination



4 罐组合糖化系统

4-Vessels Brewhouse

容积：50升-30000升

材质：304不锈钢/316不锈钢

结构：单层 双层 三层

用途：蒸馏醪液发酵 / 制作啤酒

Customized capacity: 50-30000 liters

Material: SUS304/ SUS316

Structure: single wall/cooling(dimple)jacket/
insulation(three wall) jacket

Application: Fermenting process of distillation /
Making beer



发酵罐

Fermenter Tank





清酒罐

Bright Beer Tank



壶式蒸馏器

世界上许多伟大的威士忌酒都是用壶式蒸馏器制作的,威士忌酒厂的灵魂就藏在苏格兰传统的壶式蒸馏工艺中。我们的壶式蒸馏器是纯手工捶打塑形制造的,能够按照客户需求定制任何形状和尺寸的蒸馏器。

Pot stills are used to make many of the world's great whisky. The rudimentarily reliable pot still remains king in some important circles. As our stills remain handcrafted and hand shaped we can offer pots to any contour or size that our clients desire.



双壶式蒸馏器

Double Pot Still

ZJD 300L+150L

容积: 300升+150升 (可定制)

材质: 304不锈钢/TP2紫铜

加热方式: 电加热/蒸汽加热

电压: 220V/240V/380V/415V

蒸馏产品: 威士忌

Capacity: 300L + 150L (customizable)
Material: SUS304 / TP2 red copper
Heating method: electric heating/steam heating
Voltage: 220V/240V/380V/415V
Distilled products: Whiskey



双壶式蒸馏器

Double Pot Still

ZJD 1000L+1000L

容积: 1000升+1000升 (可定制)

材质: 304不锈钢/TP2紫铜

加热方式: 电加热/蒸汽加热

电压: 220V/240V/380V/415V

蒸馏产品: 威士忌

Capacity: 1000L + 1000L (customizable)
Material: SUS304 / TP2 red copper
Heating method: electric heating/steam heating
Voltage: 220V/240V/380V/415V
Distilled products: Whiskey



双壶式蒸馏器

Double Pot Still

ZJD 300L+180L

容积: 300升+180升 (可定制)

材质: 304不锈钢/TP2紫铜

加热方式: 电加热/蒸汽加热

电压: 220V/240V/380V/415V

蒸馏产品: 威士忌

Capacity: 300L + 180L (customizable)
Material: SUS304 / TP2 red copper
Heating method: electric heating/steam heating
Voltage: 220V/240V/380V/415V
Distilled products: Whiskey



双壶式蒸馏器

Double Pot Still

ZJD 3000L+5000L

容积: 3000升+5000升 (可定制)

材质: 304不锈钢/TP2紫铜

加热方式: 电加热/蒸汽加热

电压: 220V/240V/380V/415V

蒸馏产品: 威士忌

Capacity: 3000L + 5000L (customizable)
Material: SUS304 / TP2 red copper
Heating method: electric heating/steam heating
Voltage: 220V/240V/380V/415V
Distilled products: Whiskey



双壶式蒸馏器

Double Pot Still

ZJD 5000L+5000L

容积：5000升+5000升（可定制）
材质：304不锈钢/TP2紫铜
加热方式：蒸汽加热
电压：220V/240V/380V/415V
蒸馏产品：威士忌

Capacity: 5000L + 5000L (customizable)
Material: SUS304 / TP2 red copper
Heating method: steam heating
Voltage: 220V/240V/380V/415V
Distilled products: Whiskey



双壶式蒸馏器

Double Pot Still

ZJD 6000L+4500L

容积：6000升+4500升（可定制）
材质：304不锈钢/TP2紫铜
加热方式：电加热/蒸汽加热
电压：220V/240V/380V/415V
蒸馏产品：威士忌

Capacity: 6000L + 4500L (customizable)
Material: SUS304 / TP2 red copper
Heating method: electric heating/steam heating
Voltage: 220V/240V/380V/415V
Distilled products: Whiskey



壶式蒸馏器

Pot Still

ZJD 10000L

容积：10000升（可定制）
材质：304不锈钢/TP2紫铜
加热方式：蒸汽加热
电压：220V/240V/380V/415V
蒸馏产品：威士忌

Capacity: 10000L (customizable)
Material: SUS304 / TP2 red copper
Heating method: steam heating
Voltage: 220V/240V/380V/415V
Distilled products: Whiskey



双壶式蒸馏器

Double Pot Still

ZJD 10000L+7000L

容积：10000升+7000升（可定制）
材质：304不锈钢/TP2紫铜
加热方式：电加热/蒸汽加热
电压：220V/240V/380V/415V
蒸馏产品：威士忌

Capacity: 10000L + 7000L (customizable)
Material: SUS304 / TP2 red copper
Heating method: electric heating/steam heating
Voltage: 220V/240V/380V/415V
Distilled products: Whiskey



夏朗德壶式蒸馏器

Cognac Charentais Still

ZJDC 300L

容积：300升（可定制）
材质：304不锈钢/TP2紫铜
加热方式：电加热/蒸汽加热
电压：220V/240V/380V/415V
蒸馏产品：白兰地、水果蒸馏酒

Capacity: 300L (customizable)
Material: SUS304 / TP2 red copper
Heating method: Electric / steam heating
Voltage: 220V/240V/380V/415V
Distilled products: Brandy, fruit distilled spirits



夏朗德壶式蒸馏器

Cognac Charentais Still

ZJDC 500L

容积：500升（可定制）
材质：304不锈钢/TP2紫铜
加热方式：电加热/蒸汽加热
电压：220V/240V/380V/415V
蒸馏产品：白兰地、水果蒸馏酒

Capacity: 500L (customizable)
Material: SUS304 / TP2 red copper
Heating method: Electric / steam heating
Voltage: 220V/240V/380V/415V
Distilled products: Brandy, fruit distilled spirits



柱式蒸馏器

世界上许多大型烈酒制造商都使用柱式蒸馏器。最常用的蒸馏酒是波旁威士忌、朗姆酒和伏特加。

Columns stills are used by many of the large spirits manufacturers around the world. The most common spirits made using a columns still are bourbon, rum, and vodka.

Column Stills

容积：100升（可定制）

材质：304不锈钢/TP2紫铜

加热方式：电加热/蒸汽加热

电压：220V/240V/380V/415V

蒸馏产品：白兰地、水果蒸馏酒
杜松子酒

Capacity: 100L (customizable)

Material: SUS304 / TP2 red copper

Heating method: Electric / steam heating

Voltage: 220V/240V/380V/415V

Distilled products: Brandy, fruit distilled spirits, Gin



容积：1000升（可定制）

材质：304不锈钢/TP2紫铜

加热方式：电加热/蒸汽加热

电压：220V/240V/380V/415V

蒸馏产品：杜松子酒、伏特加、威士忌

Capacity: 1000L (customizable)

Material: SUS304 / TP2 red copper

Heating method: Electric / steam heating

Voltage: 220V/240V/380V/415V

Distilled products: Gin, Vodka, Whiskey



容积: 1400升 (可定制)

材质: 304不锈钢/TP2紫铜

加热方式: 电加热/蒸汽加热

电压: 220V/240V/380V/415V

蒸馏产品: 杜松子酒、伏特加、威士忌

Capacity: 1400L (customizable)

Material: SUS304 / TP2 red copper

Heating method: Electric / steam heating

Voltage: 220V/240V/380V/415V

Distilled products: Gin, Vodka, Whiskey



柱式蒸馏器

Column Still

ZJD 4000L-C

容积: 4000升 (可定制)

材质: 304不锈钢/TP2紫铜

加热方式: 蒸汽加热

电压: 220V/240V/380V/415V

蒸馏产品: 伏特加、朗姆酒、杜松子酒、龙舌兰酒、米酒

Capacity: 4000L (customizable)

Material: SUS304 / TP2 red copper

Heating method: Steam heating

Voltage: 220V/240V/380V/415V

Distilled products: Vodka, rum, Gin, tequila, rice wine



双柱式蒸馏器

Double Column Still

ZJD 5000L-C

容积: 5000升 (可定制)

材质: 304不锈钢/TP2紫铜

加热方式: 蒸汽加热

电压: 220V/240V/380V/415V

蒸馏产品: 伏特加、朗姆酒、杜松子酒、龙舌兰酒、米酒

capacity: 5000L (customizable)

Material: SUS304 / TP2 red copper

Heating method: Steam heating

Voltage: 220V/240V/380V/415V

Distilled products: Vodka, rum, Gin, tequila, rice wine



多功能蒸馏设备

多功能蒸馏器通常是壶式蒸馏器和柱式蒸馏器的组合，以管道、仪器、阀门相连。不同的阀门配置都有着不同的蒸馏工艺，每条路径都蕴藏着独特的蒸馏风味。

Multi-function Hybrid stills are generally a combination of pot and column stills interlinked with piping, instruments and valves. Different valve arrangements give different process paths, with each path containing their own distillation properties for the spirits to be made.

Hybrid Stills



多功能蒸馏器

Multi-Function Hybrid Stills

ZJD 100L

容积：100升（可定制）
材质：304不锈钢/TP2紫铜
加热方式：电加热 / 蒸汽加热
电压：220V/240V/380V/415V
蒸馏产品：威士忌、朗姆酒、杜松子酒、白兰地、龙舌兰酒、米酒
Capacity: 100L (customizable)
Material: SUS304 / TP2 red copper
Heating method: Electric / steam heating
Voltage: 220V/240V/380V/415V
Distilled products: Whiskey, rum, gin, brandy, tequila, rice wine



多功能蒸馏器

Multi-Function Hybrid Stills

ZJD 200L

容积：200升（可定制）
材质：304不锈钢/TP2紫铜
加热方式：电加热 / 蒸汽加热
电压：220V/240V/380V/415V
蒸馏产品：威士忌、朗姆酒、杜松子酒、白兰地、龙舌兰酒、米酒
Capacity: 200L (customizable)
Material: SUS304 / TP2 red copper
Heating method: Electric / steam heating
Voltage: 220V/240V/380V/415V
Distilled products: Whiskey, rum, gin, brandy, tequila, rice wine



多功能蒸馏器

Multi-Function Hybrid Stills

ZJD 300L

容积：300升（可定制）
 材质：304不锈钢/TP2紫铜
 加热方式：电加热 / 蒸汽加热
 电压：220V/240V/380V/415V
 蒸馏产品：威士忌、朗姆酒、杜松子酒、白兰地、龙舌兰酒、米酒

Capacity: 300L (customizable)
 Material: SUS304 / TP2 red copper
 Heating method: Electric / steam heating
 Voltage: 220V/240V/380V/415V
 Distilled products: Whiskey, rum, gin, brandy, tequila, rice wine



多功能蒸馏器

Multi-Function Hybrid Stills

ZJD 400L

容积：400升（可定制）
 材质：304不锈钢/TP2紫铜
 加热方式：电加热 / 蒸汽加热
 电压：220V/240V/380V/415V
 蒸馏产品：威士忌、朗姆酒、杜松子酒、白兰地、龙舌兰酒、米酒

Capacity: 400L (customizable)
 Material: SUS304 / TP2 red copper
 Heating method: Electric / steam heating
 Voltage: 220V/240V/380V/415V
 Distilled products: Whiskey, rum, gin, brandy, tequila, rice wine



多功能蒸馏器

Multi-Function Hybrid Stills

ZJD 350L

容积：350升（可定制）
 材质：304不锈钢/TP2紫铜
 加热方式：电加热 / 蒸汽加热
 电压：220V/240V/380V/415V
 蒸馏产品：威士忌、朗姆酒、杜松子酒、白兰地、龙舌兰酒、米酒

Capacity: 350L (customizable)
 Material: SUS304 / TP2 red copper
 Heating method: Electric / steam heating
 Voltage: 220V/240V/380V/415V
 Distilled products: Whiskey, rum, gin, brandy, tequila, rice wine



多功能蒸馏器

Multi-Function Hybrid Stills

ZJD 500L-I

容积：500升（可定制）
 材质：304不锈钢/TP2紫铜
 加热方式：电加热 / 蒸汽加热
 电压：220V/240V/380V/415V
 蒸馏产品：威士忌、朗姆酒、杜松子酒、白兰地、龙舌兰酒、米酒

Capacity: 500L (customizable)
 Material: SUS304 / TP2 red copper
 Heating method: Electric / steam heating
 Voltage: 220V/240V/380V/415V
 Distilled products: Whiskey, rum, gin, brandy, tequila, rice wine



杜松子酒蒸馏器

Gin Stills

ZJD 500L-II

容积：500升（可定制）
 材质：304不锈钢/TP2紫铜
 加热方式：电加热 / 蒸汽加热
 电压：220V/240V/380V/415V
 蒸馏产品：杜松子酒

Capacity: 500L (customizable)
 Material: SUS304 / TP2 red copper
 Heating method: Electric / steam heating
 Voltage: 220V/240V/380V/415V
 Distilled products: gin



多功能蒸馏器

Multi-Function Hybrid Stills

ZJD 1000-II

容积：1000升（可定制）
 材质：304不锈钢/TP2紫铜
 加热方式：蒸汽加热
 电压：220V/240V/380V/415V
 蒸馏产品：威士忌、朗姆酒、杜松子酒、白兰地、龙舌兰酒、米酒

Capacity: 1000L (customizable)
 Material: SUS304 / TP2 red copper
 Heating method: steam heating
 Voltage: 220V/240V/380V/415V
 Distilled products: Whiskey, rum, gin, brandy, tequila, rice wine



多功能蒸馏器

Multi-Function Hybrid Stills

ZJD 1000L

容积：1000升（可定制）
 材质：304不锈钢/TP2紫铜
 加热方式：蒸汽加热
 电压：220V/240V/380V/415V
 蒸馏产品：威士忌、朗姆酒、杜松子酒、白兰地、龙舌兰酒、米酒

Capacity: 1000L (customizable)
 Material: SUS304 / TP2 red copper
 Heating steam heating
 Voltage: 220V/240V/380V/415V
 Distilled products: Whiskey, rum, gin, brandy, tequila, rice wine



多功能蒸馏器

Multi-Function Hybrid Stills

ZJD 1200

容积：1200升（可定制）
 材质：304不锈钢/TP2紫铜
 加热方式：蒸汽加热
 电压：220V/240V/380V/415V
 蒸馏产品：威士忌、朗姆酒、杜松子酒、白兰地、龙舌兰酒、米酒

Capacity: 1200L (customizable)
 Material: SUS304 / TP2 red copper
 Heating method: steam heating
 Voltage: 220V/240V/380V/415V
 Distilled products: Whiskey, rum, gin, brandy, tequila, rice wine



多功能蒸馏器

Multi-Function Hybrid Stills

ZJD 1400L

容积：1400升（可定制）
 材质：304不锈钢/TP2紫铜
 加热方式：蒸汽加热
 电压：220V/240V/380V/415V
 蒸馏产品：谷物威士忌、朗姆酒

Capacity: 1400L (customizable)
 Material: SUS304 / TP2 red copper
 Heating method: steam heating
 Voltage: 220V/240V/380V/415V
 Distilled products: Grain whiskey, rum



多功能蒸馏器

Multi-Function Hybrid Stills

ZJD 1500-II

容积：1500升（可定制）
 材质：304不锈钢/TP2紫铜
 加热方式：蒸汽加热
 电压：220V/240V/380V/415V
 蒸馏产品：威士忌、朗姆酒、杜松子酒、白兰地、龙舌兰酒、米酒

Capacity: 1500L (customizable)
 Material: SUS304 / TP2 red copper
 Heating method: steam heating
 Voltage: 220V/240V/380V/415V
 Distilled products: Whiskey, rum, gin, brandy, tequila, rice wine



多功能蒸馏器

Multi-Function Hybrid Stills

ZJD 1500

容积：1500升（可定制）
 材质：304不锈钢/TP2紫铜
 加热方式：蒸汽加热
 电压：220V/240V/380V/415V
 蒸馏产品：威士忌、朗姆酒、杜松子酒、白兰地、龙舌兰酒、米酒

Capacity: 1500L (customizable)
 Material: SUS304 / TP2 red copper
 Heating steam heating
 Voltage: 220V/240V/380V/415V
 Distilled products: Whiskey, rum, gin, brandy, tequila, rice wine



多功能蒸馏器

Multi-Function Hybrid Stills

ZJD 3500

容积：3500升（可定制）
 材质：304不锈钢/TP2紫铜
 加热方式：蒸汽加热
 电压：220V/240V/380V/415V
 蒸馏产品：威士忌、朗姆酒、杜松子酒、白兰地、龙舌兰酒、米酒

Capacity: 3500L (customizable)
 Material: SUS304 / TP2 red copper
 Heating method: steam heating
 Voltage: 220V/240V/380V/415V
 Distilled products: Whiskey, rum, gin, brandy, tequila, rice wine



多功能蒸馏器

Multi-Function Hybrid Stills

ZJD 5000-I

容积：5000升（可定制）
 材质：304不锈钢/TP2紫铜
 加热方式：蒸汽加热
 电压：220V/240V/380V/415V
 蒸馏产品：谷物威士忌、朗姆酒

Capacity: 5000L (customizable)
 Material: SUS304 / TP2 red copper
 Heating method: steam heating
 Voltage: 220V/240V/380V/415V
 Distilled products: Grain whiskey, rum



小型壶式蒸馏器

Small Pot Distiller

ZJD 20

容积：20升（可定制）
 材质：304不锈钢/TP2紫铜
 加热方式：电加热 / 蒸汽加热
 电压：220V/240V/380V/415V
 蒸馏产品：威士忌

Capacity: 20L (customizable)
 Material: SUS304 / TP2 red copper
 Heating method: Electric/steam heating
 Voltage: 220V/240V/380V/415V
 Distilled products: Whiskey



多功能蒸馏器

Multi-Function Hybrid Stills

ZJD 5000-II

容积：5000升（可定制）
 材质：304不锈钢/TP2紫铜
 加热方式：蒸汽加热
 电压：220V/240V/380V/415V
 蒸馏产品：威士忌、朗姆酒、杜松子酒、白兰地、龙舌兰酒、米酒

Capacity: 5000L (customizable)
 Material: SUS304 / TP2 red copper
 Heating steam heating
 Voltage: 220V/240V/380V/415V
 Distilled products: Whiskey, rum, gin, brandy, tequila, rice wine



小型壶式蒸馏器

Small Pot Distiller

ZJD 50

容积：50升（可定制）
 材质：304不锈钢/TP2紫铜
 加热方式：电加热 / 蒸汽加热
 电压：220V/240V/380V/415V
 蒸馏产品：威士忌

Capacity: 50L (customizable)
 Material: SUS304 / TP2 red copper
 Heating method: Electric/steam heating
 Voltage: 220V/240V/380V/415V
 Distilled products: Whiskey

CIP SYSTEM

CIP 系统



CIP 系统

CIP System

- 包括三种类型：手动操作系统、半自动化系统、全自动化系统，可根据客户要求选择定制。
Including three types: manual operating system, semi-automated system, fully automated system, can be customized according to customer requirements.
- CIP全自动系统有浓酸浓碱添加泵、CIP罐、换热器、酸碱浓度仪、防泄漏阀阵等组成，清洗效果安全可靠。
CIP automatic system is composed of concentrated acid and alkali adding pump, CIP tank, heat exchanger, acid and alkali concentration meter, anti-leakage valve array, etc. The cleaning effect is safe and reliable.
- 用于对管道、储罐、蒸馏器、换热器等酒厂设备实行自动就地清洗。清洗时间、温度、压力、流量均可调节。
It is used for automatic on-site cleaning of distillery equipment such as pipes, storage tanks, stills and heat exchangers. Cleaning time, temperature, pressure, flow can be adjusted.



便携式CIP车

Portable CIP Cart

PORTABLE CIP CART

便携式CIP车

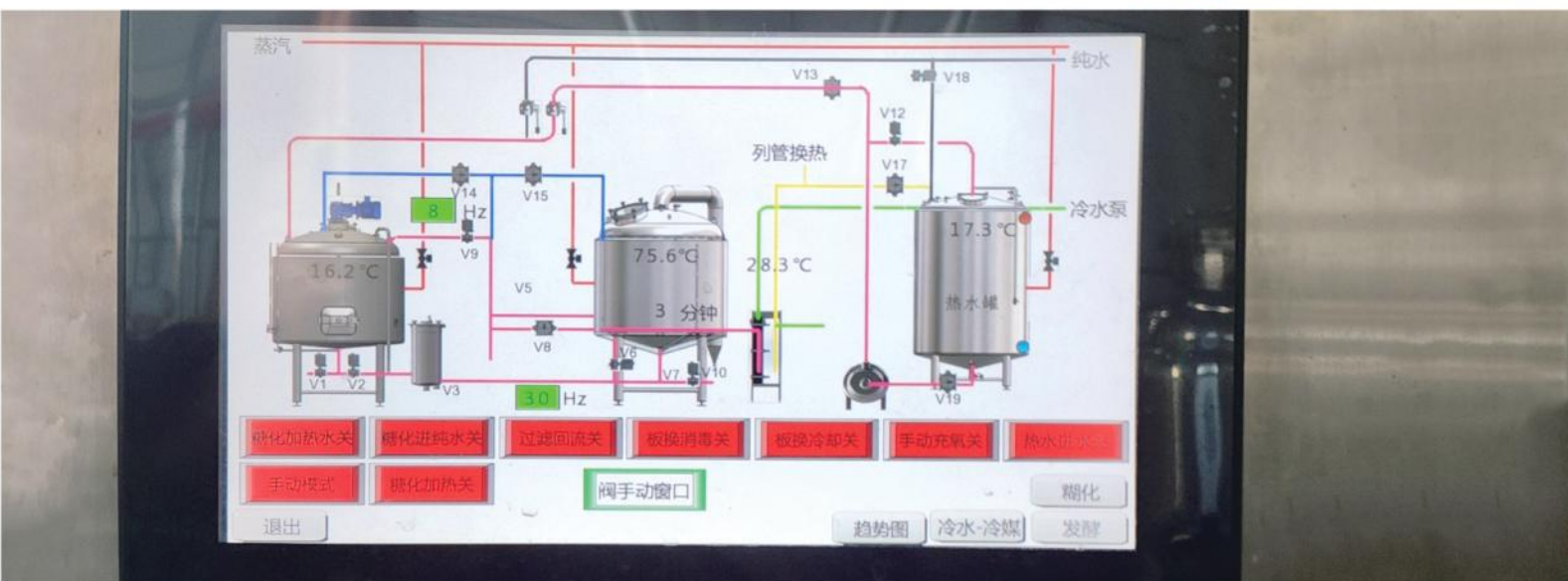
- 更适合小型啤酒厂，采用酸罐和碱罐的双罐配置。碱罐带电加热器，带有烧保护装置，有独立的控制面板，用于泵控制和温度调节。整个机组安装在较小的小车上，可以轻松移动。

It is more suitable for small breweries and uses a two-tank configuration with acid and alkali tanks. Alkali tank with electric heater, with overburn protection device. The unit has a separate control panel for pump control and temperature regulation. The whole unit is mounted on a smaller trolley and can be moved easily.

AUTOMATIC CONTROL SYSTEM

自动化控制系统

- 生产过程数据有效保存，实现产品质量追溯
All the data of the production process are effectively saved to achieve product quality traceability
- 实时比较计划生产与实际生产情况
Compare planned production with actual production in real time
- 监测影响产品质量和生产过程的原料变化
Monitor material changes affecting product quality and production process
- 通过检测控制模块，实现全自动生产和清洁
Fully automatic production and cleaning through inspection control module



CONTAINER STORAGE TANKS

容器储罐



- 专为容器制造设计的生产车间
A production workshop designed for the manufacture of container storage tanks
- 加工步骤协同高效，细节精准
The processing steps are collaborative and efficient, and the detail processing precision is high
- 达到标准化的焊接和测试方法
Operate welding and testing parties according to standardized methods
- 性能强大的自动化生产设备
Powerful cutting, drawing, welding and other automatic production equipment
- 完整的打磨酸洗喷砂等表面处理工艺
Complete grinding, pickling, sandblasting and other surface treatment processes



全球服务能力 Global Service Capability



◦ 无论您是在中国，还是在欧洲，或者在南美，我们的全球客户服务团队都将为您提供帮助。设备工程师支持网络遍布各大洲，在全球拥有多个代理商和服务中心。
Whether you're in China, Europe, or South America, our global customer service team is here to help. Engineer support network on all continents, with multiple agents and service centers worldwide.

- 交钥匙解决方案
TURNKEY SOLUTIONS
- 快速零件交付
FAST PARTS DELIVERY
- 远程技术支持
REMOTE TECHNICAL SUPPORT
- 工程师现场服务
ENGINEER FIELD SERVICE
- 视频用户手册
VIDEO USER MANUAL
- 长期质量
LONG TERM QUALITY



研发中心

Research And Development Center



- 2020年，正久成立酿酒研发中心，以新技术、新工艺的研发作为核心任务，专业从事啤酒、威士忌等各类洋酒自动化设备的研发。正久积极展开酿酒技术开发工作，建设试验站和自动化精酿设备，研发中心拥有着先进的蒸馏设备制造工艺、具有雄厚的研发实力。

In 2020, Zhengjiu Machinery established a brewing and distillation research and development center, with the research and development of new technologies and new processes as the core task, specializing in the research and development of beer, whiskey and other alcohol automation equipment. Zhengjiu machinery actively carries out the development of brewing and distillation technology, builds test stations, and configures automatic brewing equipment. In the R & D center, we have advanced distillation equipment manufacturing technology and strong R & D strength.

- 研发中心重点展开三个方面的工作：酿造过程中设备运行技术的改进；自动化生产线的改造及技术的应用；科技成果评价、再开发、产品化、推广及示范。

The research and development center focuses on three aspects of work: 1. In the brewing process, the improvement of equipment operation technology; 2. Transformation of automatic production line and application of technology; 3. Evaluation, redevelopment, productization, promotion and demonstration of scientific and technological achievements.

- 面对不断出现的新机遇和新挑战，研发中心每位工程师持续关注国内外市场发展的最新动态。杭州正久机械制造股份有限公司正沿着“集团化、产业化、专业化、国际化”的道路奋勇前进，继续为中国乃至全球的酒类酿造事业不断贡献力量。

In the face of new opportunities and new challenges, every engineer in the R&D center constantly pays attention to the latest developments of domestic and foreign market development. Hangzhou Zhengjiu Machinery Manufacturing Co., Ltd. is forging ahead along the road of "collectivization, industrialization, specialization and internationalization", and continues to contribute to the wine brewing industry in China and even the world.

PROJECT CASES (PART OF)

项目案例 (部分展示)



澳大利亚客户 Australian clients



德国客户 German clients



秘鲁客户 Peruvian customers



尼泊尔客户 Nepalese clients



安徽客户 Anhui customer



浙江客户 Zhejiang Customers



秘鲁客户 Peruvian customers



上海客户 Shanghai Customers



美国客户 US clients

PROJECT CASES (PART OF)

项目案例 (部分展示)



浙江客户 Zhejiang Customers



重庆客户 Chongqing customer



四川客户 Sichuan Customers



福建客户 Fujian customers



内蒙古客户 Inner Mongolia customer



广东客户 Guangdong customers



尼泊尔客户 Nepalese clients



美国客户 US clients



韩国客户 Korean customers

PROJECT CASES (PART OF)

项目案例 (部分展示)



澳大利亚客户 Australian clients



澳大利亚客户 Australian clients



美国客户 US clients



贵州客户 Guizhou customer



澳大利亚客户 Australian clients



加拿大客户 Canadian clients



浙江客户 Zhejiang Customers



上海客户 Shanghai Customers



秘鲁客户 Peruvian customers